

## Veeam Business View

### Take a Business View of Your VMware vSphere!

Veeam Business View is an add-on that works with other Veeam products to provide business categorization for your VMware vSphere environment. Business View allows you to group, view and manage virtual machines (VMs) based on criteria such as business unit, department, location, purpose, SLA etc., instead of their VMware infrastructure location.

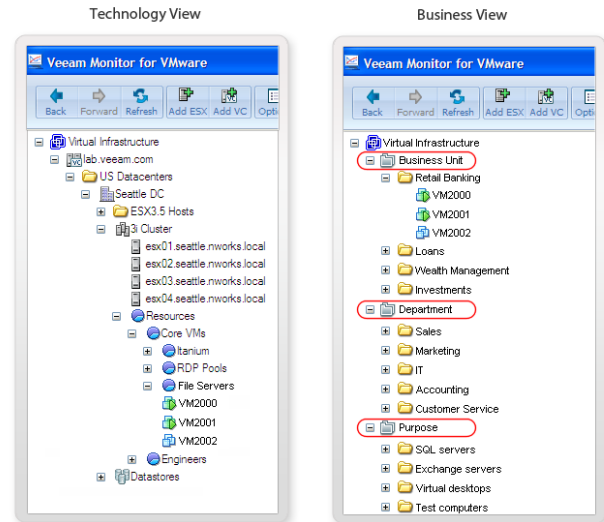
Unlike Business View, VMware vCenter provides only an administrative (technical) view of the VMware infrastructure, showing VMs grouped by datacenters, clusters, or ESX and ESXi hosts. You can use VM folders to manually group VMs based on business criteria, but maintaining these folders requires daily error-prone manual procedures, and they are limited to only one categorization dimension.

Veeam Business View offers an automated, flexible and dynamic way to group your VMs within different categories: business unit, department, purpose and other. Thus, with Business View, you can see and manage your virtual infrastructure based on business needs and priorities. You have the flexibility to group your VMs within these categories according to your specific requirements.

Business View uses VMware's native custom attributes to categorize VMs. Business View allows editing the attributes manually for one or multiple VMs at a time, or automatically based on pre-defined rules. For example, you can define an automated rule as "if a VM has retail in its name, add it to the Retail Banking category."

Business View is integrated with Veeam Reporter Enterprise, the Veeam nworks Management Pack and the nworks Smart Plug-in. In the near future, it will also be integrated with Veeam Monitor and Veeam Backup & Replication. Business View is available at no extra charge for all current Veeam customers on maintenance.

### Veeam Business View



Veeam Business View allows you to view your VMware vSphere from a business perspective, define the Chargeback model and control "VM Sprawl"

**Manage your VMs from a business perspective.** Veeam Business View uses custom attributes to group, view and manage VMs based on business criteria - helping you prioritize resource allocation, perform chargeback and control VM sprawl.

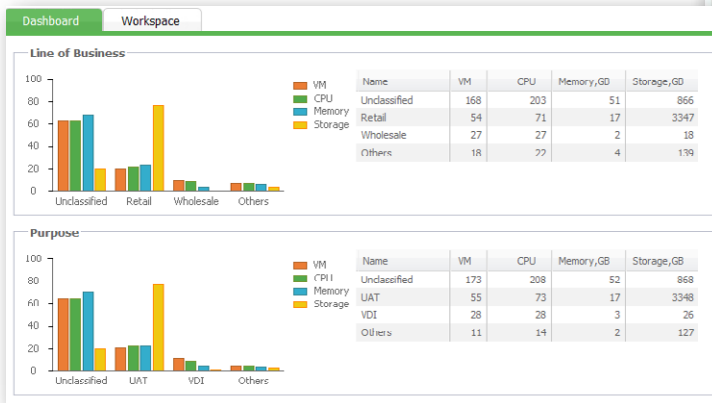
**Prioritize resource allocation and utilization across your business.** Business View's unique dashboard view allows you to see at a glance the number of VMs, vCPUs, amount of memory and storage used by each business unit, department, and purpose, as well as in other business terms.

**Control VM sprawl.** Business View helps you control VM sprawl by assigning all the VMs in your datacenter. Unassigned VMs and the resources they use can be immediately seen on the web-based dashboard.

- Manage from a business perspective
- Prioritize resource allocation
- Define chargeback model
- Prevent VM sprawl

**Define your chargeback model.** Together with Veeam Monitor and Veeam Reporter Enterprise that provide comprehensive resource utilization and allocation information, Business View gives you the flexibility to define a chargeback model the way you want. In addition, you can easily export the VM groups' information to a Microsoft Excel document for reporting or integration with other chargeback, inventory, or billing systems.

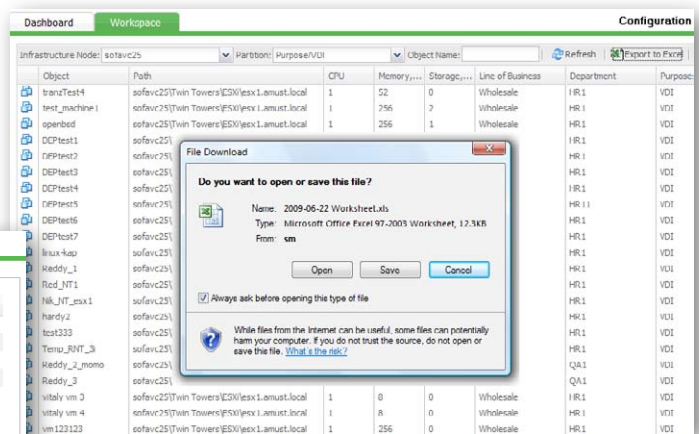
**Leverage your investments in Veeam.** Get even more value from your investment in Veeam products with Business View. Make your Reporter Enterprise reports more useful by basing them on VM business unit, department or purpose – instead of just cluster, host or datacenter level. Create more effective nworks MP or SPI alarms by assigning different alarms to VMs with different SLA levels or performance characteristics. Integration with more Veeam products will be added soon!



**“Set & forget” automated VM categorization and workflow.** No more need for repetitive manual categorization of new VMs into multiple folders. Set up rules and policies once, and new VMs will automatically be grouped appropriately.

**Integration with your existing VM categorization process.** Are you already using custom attributes to group your VMs by business unit, department, purpose, or SLA? Veeam Business View can automate and extend what you already have – no need to recreate everything from scratch.

**Open architecture.** Because Business View integrates with vCenter data, you can fully leverage the advantages of Business View with the VMware Virtual Infrastructure Client and other third-party products. To reduce complexity, Veeam Business View comes with a built-in web service that allows any application to quickly query a specific category's content directly from the Business View server, without putting any extra load on the vCenter server.



The data can be exported to your other chargeback, inventory or billing system

**System Requirements**

- VMware vSphere 4: ESX Server 4; vCenter Server 4.0
- VMware Infrastructure 3: ESX Server 3.x; VirtualCenter 2.x
- Windows XP (SP2 or later), Windows Vista, Windows Server 2003, Windows Server 2008
- Microsoft SQL Server 2005 Express, or SQL Server 2005
- Microsoft .NET Framework 2.0 or later

**Support Information**

For technical support please visit <http://www.veeam.com/support.html> or email [support@veeam.com](mailto:support@veeam.com) and our support representative will contact you promptly.

**U.S. Headquarters**  
6479 Reflections Drive,  
Suite 200  
Columbus, Ohio 43017

**EMEA Headquarters**  
400 Thames Valley Park  
Thames Valley Park Drive  
Reading, Berkshire RG6 1PT

Phone: +1-614-339-8200  
Fax: +1-614-675-9494

Phone: +44 (0) 1276-804-501  
Fax: +44 (0) 1276-804-676