

## Get relief with ELM Performance Manager™

EPM monitors resource trends and thresholds from hundreds of servers and workstations, launches alerts, and generates reports keeping IT Managers informed of costly bottlenecks before productivity is threatened. Using EPM, System Administrators keep their systems operating at peak performance.

### Monitoring

With EPM, administrators can monitor Windows systems at scheduled intervals or in real-time. Real-time monitoring uses a Service Agent on the target system, while scheduled monitoring is performed with a Virtual Agent. EPM automates:

- ◆ WMI monitoring
- ◆ Collection and aggregation of performance counters
- ◆ Performance alerts when thresholds are surpassed
- ◆ Monitoring of processor time, processor counts, new processes, and terminated processes

### Notification

EPM allows IT Managers to customize 15 notification options to alert the responsible administrator or take automated corrective action. Barrage protection prevents alert storms from becoming a nuisance.

**ELM Advisor** is an innovative desktop notification exclusive to TNT Software that informs IT Administrators of changing conditions without disrupting their workflow.

### Database

EPM Performance Manager supports Microsoft SQL Server and Microsoft SQL Server 2000 Desktop Engine. **Database Failover** provides fault-tolerant, continuous collection of monitored system information. Filter-based archiving and pruning tools are provided with EPM to efficiently manage critical data and storage costs.



We know  
how you  
feel...

**ELM Performance Manager** includes:

- ◆ **Agents** collect data from the monitored systems.
- ◆ **ELM Server** receives and processes data from the Agents.
- ◆ **Database** stores and archives data from the ELM Server (provided by user).
- ◆ **ELM Console**, a Microsoft Management Console snap-in, is the User Interface.
- ◆ **Web Viewer** provides easy access to a streamlined version of the ELM Console.

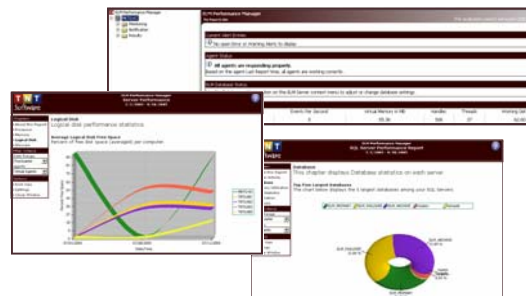
### Results

With ELM Performance Manager, IT Managers gain a clear view of critical performance trends.

**ELM Reports** automates the configuration reports designed for distribution to IT Managers, Security Auditors, and other IT professionals. Reports are:

- ◆ Active Directory
- ◆ SQL Server Performance
- ◆ Windows - Microsoft Message Queue
- ◆ Windows DNS Server
- ◆ Windows Server System - Rights Management Service
- ◆ Network Health & Performance
- ◆ Process Performance
- ◆ Exchange Server
- ◆ IIS Server Report
- ◆ ISA Server 2000
- ◆ ISA Server 2004
- ◆ Microsoft Identity Integration Server 2003
- ◆ Sharepoint Portal Server 2003
- ◆ Server Performance

- ◆ **At-a-glance Views** display critical data for rapid problem identification and resolution. The IT professional can easily see alerts from each monitored system without leaving the ELM Console.



**Microsoft**  
**GOLD CERTIFIED**  
Partner

2001 Main Street  
Vancouver, WA 98660  
Phone: 360.546.0878  
Fax: 360.546.5017  
Toll-Free: 877.546.0878  
www.tntsoftware.com

