

## Get fast relief with ELM Log Manager™

ELM collects critical log data from hundreds of systems, presents the information in a granular format, and launches alerts so that System Administrators can replace forensic follow-up with proactive management. Using ELM, Security Administrators immediately know about threats to their systems. ELM Log Manager fortifies the security perimeter, making it easy to see unauthorized usage and system inconsistencies that could lead to disaster.

### Monitoring

With ELM, administrators can monitor Windows systems at scheduled intervals or in real-time. Real-time monitoring uses a Service Agent on the target system, while scheduled monitoring is performed with a Virtual Agent. ELM automates:

- ◆ Consolidation of Windows events logs
- ◆ Alerts for presence or absence of specific Windows Events
- ◆ Monitoring of Application Logs
- ◆ Syslog Message and SNMP Trap translation and logging

### Notification

ELM allows IT Managers to customize notification options to reach the responsible administrator or take automated corrective action. Barrage protection prevents event storms from becoming a nuisance.

- ◆ **ELM Advisor** is an innovative desktop notification exclusive to TNT Software that informs IT Administrators of changing conditions without disrupting their workflow. Notification options are:
  - ◆ SMTP or MAPI email
  - ◆ LED marquee sign
  - ◆ Pager
  - ◆ Audibles
  - ◆ MSN Instant Message
  - ◆ Command script
  - ◆ Network pop-up
  - ◆ Syslog message
  - ◆ Web post
  - ◆ SNMP OID/trap

We know how you feel...



### ELM Log Manager includes:

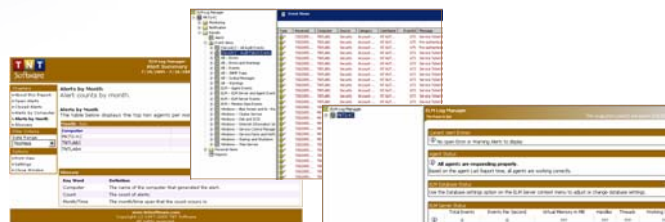
- ◆ **Agents** collect data from the monitored systems.
- ◆ **ELM Server** receives and processes data from the Agents.
- ◆ **Database** stores and archives data from the ELM Server (provided by user).
- ◆ **ELM Console**, a Microsoft Management Console snap-in, is the User Interface.
- ◆ **Web Viewer** provides easy access to a streamlined version of the ELM Console.

### Results

With ELM Log Manager, IT Managers gain a clear view of critical log entries.

**ELM Reports** automates the configuration of informative reports designed for distribution to IT Managers, Security Auditors, and other IT professionals.

**At-a-glance Views** display critical data for rapid problem identification and resolution. The IT professional can easily see alerts and events from each monitored system without leaving the ELM Console. **Filtered Views** provide the ability to build views tailored to functional objectives. Administrators can immediately focus on specific sets of event data.



### Database

ELM Log Manager supports Microsoft SQL Server and Microsoft SQL Server 2000 Desktop Engine. **Database Failover** provides fault-tolerant, continuous collection of monitored system information. Filter-based archiving and pruning tools are provided with ELM to efficiently manage critical data and storage costs.



**Microsoft**  
**GOLD CERTIFIED**  
Partner

2001 Main Street  
Vancouver, WA 98660  
Phone: 360.546.0878  
Fax: 360.546.5017  
Toll-Free: 877.546.0878  
www.tntsoftware.com

