



# DESKTOP AUTHORITY IMAGE CENTER™

**Desktop Authority® Image Center™** increases efficiency and lowers the cost of provisioning and re-deploying desktops and servers by providing simple, centralized control over the capture, customization and distribution of disk images.

The first step of the desktop lifecycle begins when a new PC arrives. Before it can be released to a user it must first be prepared with the corporate standard operating system, patches, computer names, network settings, local user and group accounts, a basic set of applications and so on. This labor-intensive exercise takes all day if it is done by an individual administrator.

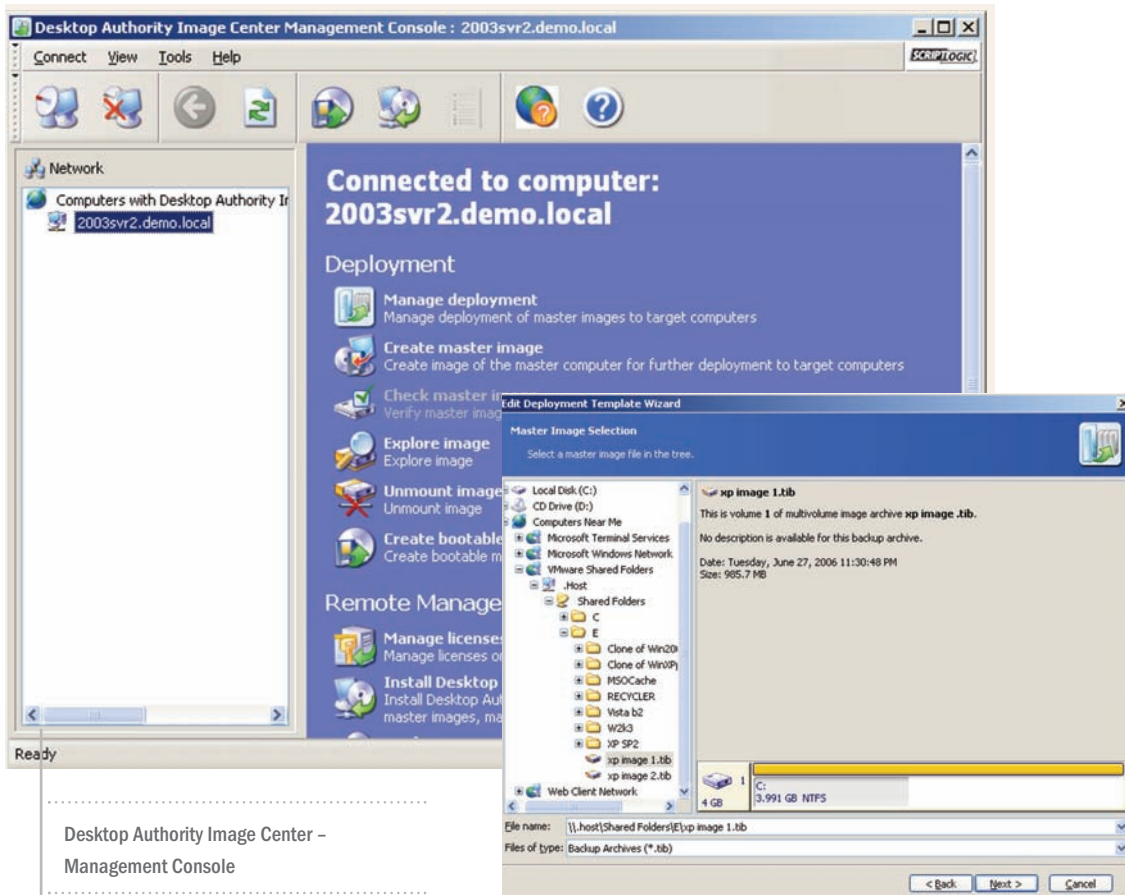
A more efficient solution is to capture the “image” of a template PC that has everything configured and installed correctly, and then to copy and customize that image.

Desktop Authority Image Center is a comprehensive solution which uses this imaging technique to reduce the time and cost required to provision Windows desktops and servers.

Desktop Authority Image Center plays a vital role in Desktop Authority's management of the Windows desktop lifecycle, offering centralized provisioning and preparation of desktops to get them to the point where they are ready for first logon. In addition, Desktop Authority Image Center manages services and scheduled tasks on Windows desktops for ongoing management of the desktop lifecycle.

Desktop Authority Image Center automates many of the processes involved in desktop provisioning, including:

- **Naming the computer**
- **Installing the correct drivers and/or HAL**
- **Network settings**
- **Domain membership**
- **Change security ID's**
- **Copying files and running applications and scripts**



Desktop Authority Image Center –  
Management Console

## KEY BENEFITS

### Centralized Desktop and Server Provisioning

Capture, manage, customize and deploy images across the enterprise from one location

### Wizard-Driven Operation

Intuitive user interface makes extensive use of wizards to simplify complex operations into point-click-done usability

### Highly Customizable Operation

Huge flexibility to cope with hardware differences between source and target computers and ensure pain-free image deployment

## KEY FEATURES

### Multiple Pre-Boot Methods

Create bootable media, deploy the PXE Server or use Microsoft RIS Server to launch the pre-boot environment and capture/deploy images

### Image Editing

Mount images in Windows Explorer and edit them just like any other hard drive

### Universal Restore

Ensure that your new systems will boot by allowing you to add drivers and HALs for different hardware

### Unicast/Multicast with Bandwidth Control

Deploy images to multiple desktops at once without flattening the network

### Capture and Compression

Disk images are captured and compressed for rapid, efficient transfer onto a file server

### Manage Services and Tasks

Once Windows is up-and-running, keep it running smoothly and securely with central management of services and scheduled tasks

## SYSTEM REQUIREMENTS

### Imaged Operating Systems

Windows XP (32-bit and x64), NT4 Server and Workstation, Windows 2000 Server and Professional, Windows 2003 Server

### Management Console

Windows XP (32-bit and x64), NT4 Server and Workstation, Windows 2000 Server and Professional, Windows 2003 Server

## LICENSING

Desktop Authority Image Center is licensed by the number of computers that will be imaged.

For pricing, contact your ScriptLogic reseller or call ScriptLogic at **1.800.813.6415**