



Enterprise Security Reporter™ is a comprehensive reporting solution for Windows NT/2000/2003 networks that combs through the vast amount of data found within NTFS permissions, Active Directory user and group accounts, server registries and shares and stores the information collected in a reporting database, allowing administrators to analyze, query and report on the security configuration of their network.

In large and complex networks, the sheer number of permission settings makes it almost impossible to gain a clear overview of overall security, and checking that all those permissions are in compliance with corporate and regulatory standards is a Herculean task. Native, built-in operating system tools are inadequate and do not provide the summary or detailed reports needed to understand and proactively manage access controls.

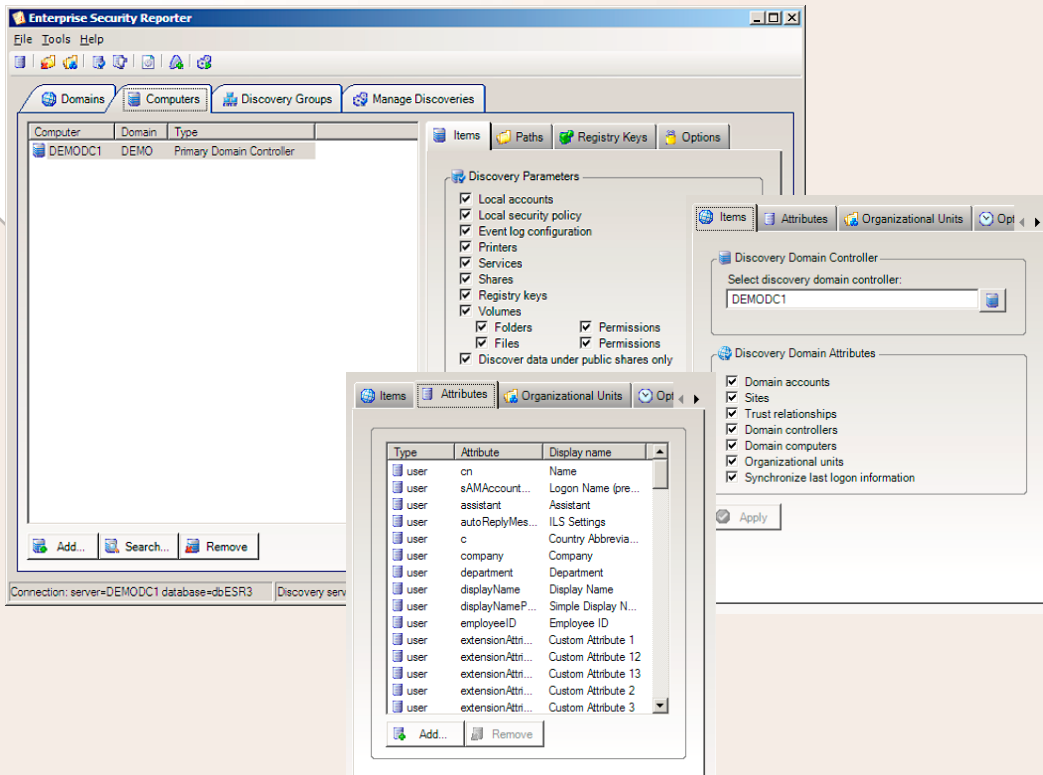
Enterprise Security Reporter focuses on enterprise-wide Windows network permissions. Using agent-less discovery of Active Directory, NTFS (file and folder) permissions, the registry, and file and printer shares, Enterprise Security Reporter produces the vital reports needed to document security and take proactive action. Further, Enterprise Security Reporter provides analysis of all that information to show how users gain access to selected resources, and highlights where permissions have been modified, increased or removed.

COMPREHENSIVE REPORTING ON WINDOWS SECURITY

ESR's discovery engines remotely collect relevant security information from Windows servers and Active Directory and store it in a database for analysis and reporting. Servers can be selected for individual discovery or Discovery Groups can be created to define sets of servers and domains. The Discovery Console gives the user complete control over which security attributes should be discovered and stored in the database, including:

- Domain and Local Users, Groups, Memberships, Account Rights, AD Attributes and Last Logon
- Folders and Files (NTFS permissions, size, ownership)
- File Shares and Printers (and their permissions)
- Domain Controllers and Trust Relationships
- Services (and their permissions)
- Local Computer Policies and Event Log Configurations
- Registry Keys (and their permissions)

Enterprise Security Reporter's intuitive Discovery Console makes selection of security information a simple centralized task.



SECURITY LIFECYCLE MAP

Assess	Assign	Audit
Accessibility		
Accountability		
Assurance		

<http://www.scriptlogic.com/slm>

KEY BENEFITS

Simplified Security Reporting

Centralized consoles configure what should be collected, when, what should be reported and when it should be emailed directly to your Inbox, making reporting on your enterprise an easy task.

Assists with Compliance

Proactive maintenance and reporting on access controls helps meet the requirements of regulatory and best practice standards.

Enhances Windows Security

Find weaknesses, over-exposed files, over-privileged users and complete security audits in a fraction of the time.

KEY FEATURES

IMPROVED! Intuitive Interface

Both the Discovery and Reporting management consoles have been re-written to make the task of collecting and reporting easier, increasing productivity and control.

IMPROVED! Faster Discovery

The speed of discovery and collection has been increased up to 5 times that of the previous version

NEW! Distributed Discovery Servers

Placing discovery servers at remote sites further increases the speed of discovery and collection and minimizes WAN traffic.

IMPROVED! Report Customization

Using the Report Composer, reports can be built using a simple wizard, without needing to know SQL statements. Those familiar with SQL can directly edit queries, if desired.

NEW! Delta Reporting

Reporting on security changes is now as easy as selecting two completed discoveries and running a Delta Report.

NEW! Automated Report Delivery

Reports can be scheduled and emailed via any SMTP-based email system.



TURNKEY REPORTS

Enterprise Security Reporter has over 100 built-in reports, encompassing the most common reporting needs. Reports are based on the information collected using Enterprise Security Reporter's Discovery Console. A simple selection of the type of report (such as File Permissions, Group Memberships or Ownership) and the specific report you wish to run, and you instantly have an organized, useful set of information at your fingertips. Reports can be easily categorized based on your organizations needs using an explorer-like interface.

"DELTA" SNAPSHOT COMPARISONS

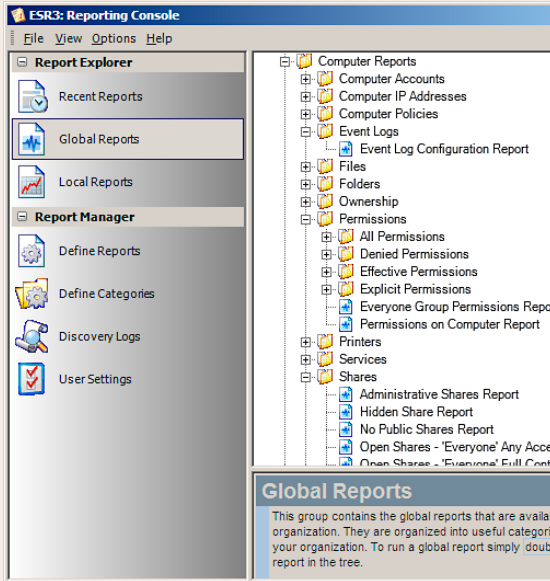
Reporting on the current state of security is one thing, but finding changes from a "known good" state is just as important. Enterprise Security Reporter's Delta Reporting allows administrators to select two discovery snapshots and report on the differences, highlighting the security changes made to file systems, registries, shares, Active Directory and more.

ENTERPRISE SCALABILITY

Enterprise Security Reporter is not limited to reporting one server's security at a time; it supports the definition of Enterprise Scopes to easily include reporting on multiple Windows servers and domain controllers anywhere in your Windows network. The data used to generate reports is stored in a SQL (or MSDE) database, making the data easily accessible to many users within your enterprise from the Reporting Console.

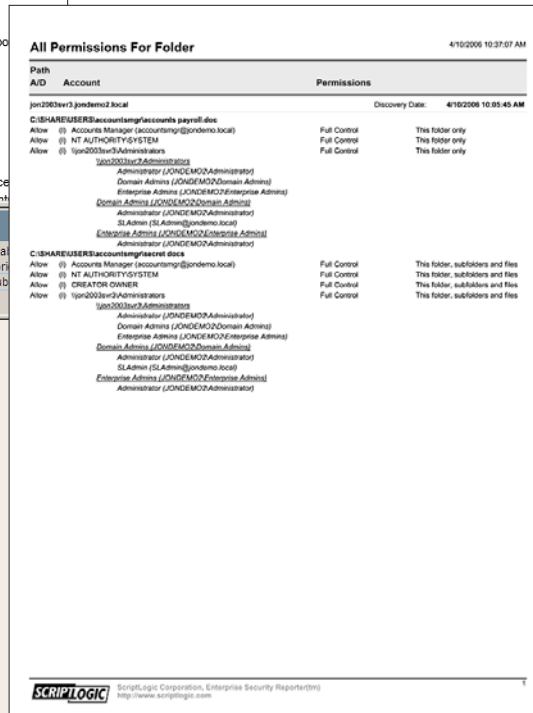
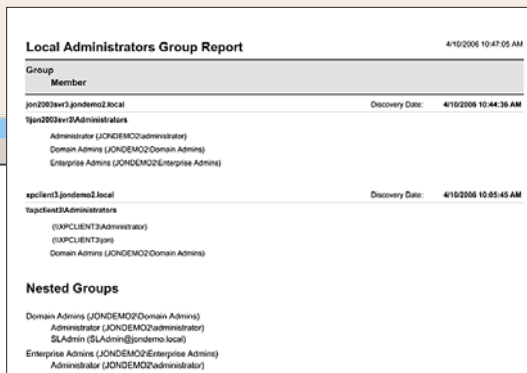
EXTENSIBLE REPORTING

When custom reports are required, you can use the Report Composer. This built-in graphical report generator allows you to easily modify and extend the turnkey reports, or to create customized reports from scratch, all without the need to write SQL queries. Of course, if you're a SQL guru then Enterprise Security Reporter will let you use your skills to present the most thorough and analytical reports you can think of!



Global Reports
This group contains the global reports that are available to all organizations. They are organized into useful categories for your organization. To run a global report simply double-click on the report in the tree.

Enterprise Security Reporter's Reporting Console organizes reports in an easy-to-navigate interface, allows custom reporting and exports reports into well-known formats and scheduled email delivery of reports.



F.A.Q.

How does reporting help with compliance?

Regulatory and best practice standards such as HIPAA, SOX, ITIL and ISO 17799 require the auditing of access and security controls. The ready-made reports supplied in ESR address many of these requirements, and custom reporting can further focus on specific aspects of compliance audits.

Can I see who can access a file?

Yes! Enterprise Security Reporter will show the list of all users who have access to a given file or folder, and whether it's because of NTFS inheritance or a nested group membership.

What Formats Do Reports Come In?

Acrobat (PDF), RTF, CSV, HTML, TXT, TIF

Is an Evaluation Available?

Yes! A fully-functional 30-day evaluation download is available at scriptlogic.com

SYSTEM REQUIREMENTS

Discovery Console

Enterprise Security Reporter's Discovery Console can be installed on Windows 2000/XP/2003 and requires MSDE or SQL Server 2000 or higher.

Discovery Agents

Discovery Agents can be installed on Windows 2000/XP/2003

Reporting

Enterprise Security Reporter's Reporting Console can be installed on Windows 2000/XP/2003.

Client Support

Enterprise Security Reporter can discover information on Windows NT/XP/2000/2003 Server operating systems, NT domains and Windows 2000 and 2003 Active Directory.

LICENSING

Enterprise Security Reporter is licensed on a **per-server** basis.

For pricing, contact your ScriptLogic reseller or call ScriptLogic at **1.800.813.6415** or **1.561.886.2420**

Please refer to our web site for international office information

