



Put your network into Perspective.™

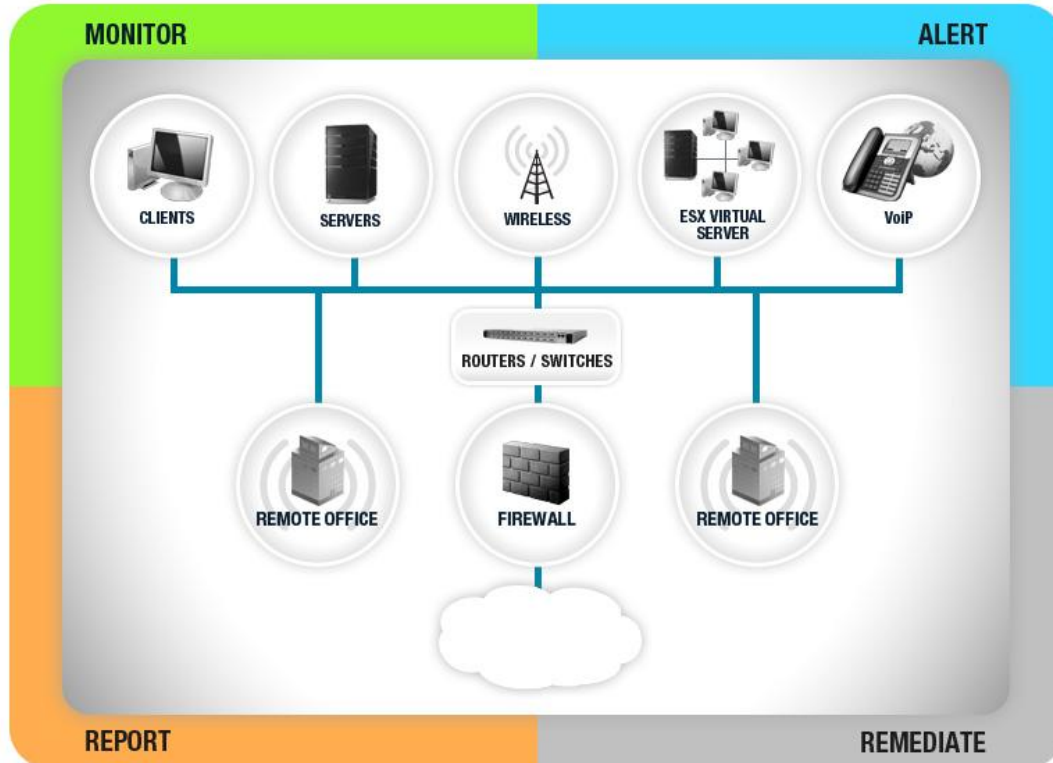
**Perspective** is a comprehensive and affordable network management and application monitoring solution. It solves the problems associated with bandwidth, network and application performance, and connectivity that are often constant, time-consuming issues for IT departments. Perspective supports multiple sites, is easier to use and more comprehensive than traditional network management products.

## THE NETWORK MANAGEMENT CHALLENGE

Few businesses realize how critical their network is nor how much it could cost them if it went down. **Gartner estimates that the average cost of downtime for corporations to be as much as \$42,000 per hour.**

Organizations grow, networks become more complex; it becomes more difficult to identify potential problems and fix them quickly. Technologies like wireless networking and virtualization have added diversity to the devices being managed on networks. The addition of remote and home offices adds to the complexity and difficulty of managing the network and devices.

Perspective offers a solution that can address all of these issues, prevent loss of productivity and ease the strain on network support. This solution will monitor all the devices on the network, create a baseline of network performance, alert you only on issues that deviate from the baseline and remediate many issues detected. Perspective provides the most insight and control over your network. As your organization grows, standard and customized reporting is available for every aspect of your network, including device performance, load, failures and weaknesses that will allow you to effectively plan for added capacity.



## KEY FEATURES/BENEFITS

### Your Network, from Any View

View network traffic from the 'perspective' of any device on the network. Access the device directly from the dashboard and view related devices, configurations, traffic and directly modify settings.

### Easy to Install and Deploy

Install and configure in 15 minutes using a simple 3 step process. All devices on the network are discovered and assigned to a Smart Policy, reducing configuration time. Automatically enable and configure SNMP in minutes for all your network devices.

### Monitor all Your Devices

Capture network data for any device on the network – switches, routers, servers, desktops. NetFlow, sFlow, J-Flow are supported and Perspective's own ptFlow™ technology is used to collect data on devices that do not support these standards.

### Reduce Downtime

Identify problems faster with continual performance monitoring. Auto remediation takes steps to restore services when a failure occurs, such as restarting applications and windows services, or rebooting servers. Go Live provides real-time monitoring and data collection;; helping to identify performance issues in seconds and reduce mean time to repair.

### Reduce False Alerts

By analyzing collected data and identifying changes in network behavior, a baseline is established for expected activity for a device and network. Once irregular behavior is detected, qualified alerts are created. Critical alerts can be escalated until the issue is resolved and suppress alerts for scheduled network maintenance.

### Help Desk Integration

Ensuring complete logging of any network issues, Perspective integrates with our Help Desk Authority solution. If issues are detected, a ticket can automatically be generated with details and direct links to affected devices. Any auto remediation actions are also logged, allowing IT staff to quickly begin more in-depth troubleshooting.

### VoIP Monitoring

Monitor, alert, and report on the network's capacity to provide acceptable VoIP call quality. Seamlessly integrate with network management capabilities, providing combined voice and data network visibility, actionable intelligence and control over VoIP. Cisco devices only.

### Wireless Monitoring

Centralize the management of distributed wireless networks with configuration in Smart Policies and monitoring in Dashboards. Understand how well the wireless network is performing and detect rogue users. Enhanced visibility for Cisco devices, view key performance data for any wireless device.

### Virtualization Support

The Virtualization module automatically discovers any host ESX servers and associated guest virtual machines and provides insight into key statistics like status, CPU, memory, disk usage, and interface traffic.



Put your network into Perspective.™

Perspective offers additional modules that enhance functionality.

- Network Traffic Monitoring—supports NetFlow®, sFlow®, J-Flow and uses pFlow for non-supported devices.
- VoIP Monitoring—Monitor, alert and report on your Cisco VoIP devices for call quality, jitter and dropped calls.
- Wireless Monitoring—Monitor signal strength, quality, connected users and run reports on performance data.

**Monitor**

- Windows Servers
- Exchange Servers
- AD, Exchange and SQL services
- Routers, Switches, Firewalls
- Wireless Access Points
- Cisco® VoIP devices

**Performance Baseline**

- Identify normal increases and decreases in network utilization
- Eliminate false alerts based on normal activity
- Reduce manual configuration time
- Reduce mean time to repair

**Alert**

- Qualified alerts across all networked devices
- Alerts delivered via SMS or email
- Configure alerts for related events or conditions
- Configure alerts for stopped services, CPU, RAM, disk space
- Configure alerts for traffic load, VoIP jitter, signal strength
- Automatically escalate unresolved issues

**Remediate**

- Automatically restart services, applications or reboot computers
- Send syslog commands to network devices
- Restart virtual machines

**Config Backup**

- Backup config file changes from network devices
- View and compare historical config backups
- Detect changes in config backups and receive alerts

**Report**

- Generate reports for all collected network data
- All reports can be printed, emailed and saved
- Define time periods and change chart types with one click
- Schedule automatic reports

**Plan**

- Use reports to view historical trends of performance and usage
- Identify overloaded servers
- Discover network devices that cause chokepoints
- Pinpoint holes in wireless network coverage

**F.A.Q.**

**Can I monitor every device on my network, including servers and desktops?**

Yes, SNMP monitoring is used to manage all network devices and WMI for servers and desktops. Perspective's pFlow technology can monitor the traffic on any device on the network and the remote agent can monitor and manage remote networks and devices operating outside the network, such as laptops.

**How can Perspective save my organization money?**

Every second that your network is down or provides degraded service, it reduces productivity, which costs your organization money. Perspective can quickly and efficiently monitor, identify and resolve issues on any network device, including VoIP and wireless devices, aiding IT staff and reducing network downtime.

**SYSTEM REQUIREMENTS**

**Perspective Host Server and Collection Agent Requirements**

- 32 or 64 bit OS
- Windows Server 2003 (SP1 or higher)
- Windows Vista
- Windows XP (SP2 or higher)
- 2 GHz or faster is recommended
- 2 GB RAM or more is recommended
- 20 GB or higher disk space
- Certain exceptions and ports will need to be configured in the firewall
- Net Framework—2.0 or higher

**Perspective Management Console Requirements**

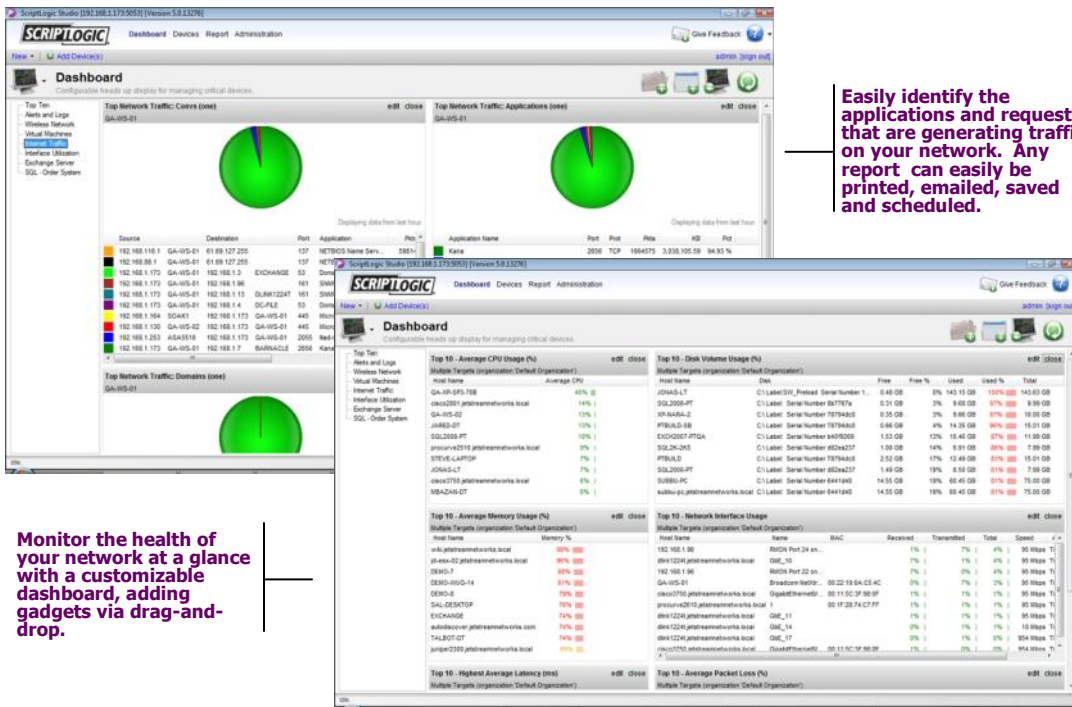
- 32 or 64 bit OS
- Windows Server 2008
- Windows Server 2003 (SP1 or higher)
- Windows 7
- Windows Vista
- Windows XP (SP2 or higher)
- MAC OS 10
- 2 GB RAM or more is recommended
- 1 GB disk space or more is recommended
- .Net Framework—2.0 or higher

**LICENSING**

Perspective and the Network Traffic Monitoring Module are licensed by the number of network devices to be monitored.

The VoIP and Wireless monitoring modules are licensed per Perspective installation.

For more information contact your ScriptLogic reseller or contact ScriptLogic at 1.800.813.6415.



Easily identify the applications and requests that are generating traffic on your network. Any report can easily be printed, emailed, saved and scheduled.

Monitor the health of your network at a glance with a customizable dashboard, adding gadgets via drag-and-drop.

