

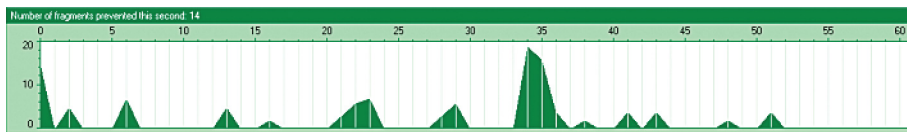
Diskeeper® 2011

Optimum system
performance. Always.™

Evaluating Diskeeper® 2011 performance technology

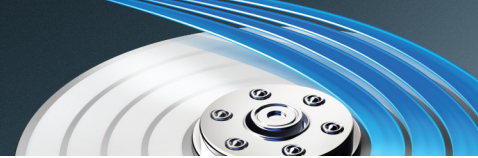
Diskeeper 2011 cuts through IT site complexity and makes every system run faster and more efficiently. The Quick Start Guide (in the Getting Started section of the Quick Launch pane) will help to lead you through all of the required steps without the need for a manual or any additional training. Use the Diskeeper Help system if you need additional information.

1. Launch Diskeeper. You will get two pop up screens. One showing you what's new and the other showing you projected improvements. Once you've click through these you will be on the main Diskeeper page.
2. Expand the **Getting Started** section on the left-side **Task Pane**, select the **Quick Start Guide**.
3. Follow the directions in the **Quick Start Guide** through the **Following Up** section.
4. Open Diskeeper, select a **volume** at the top; and under that volume's pane, select the **Dashboard tab** so that the green-colored **System Fragmentation Prevention Graph** is visible.



5. On a system connected to the Internet, browse content-rich websites. We recommend starting from sites such as MSN, Yahoo or Google News.
6. Open numerous pages (10–12) from any of these sites; e.g., if using Internet Explorer, right-click a link and open it in a new tab, right-click another link and open in a new tab.
7. Repeat the above steps a few times, and then close a few of the recently opened tabs as well.
8. While your web browser is loading the web pages, quickly navigate back to Diskeeper 2011 to view the live reporting in the **System Fragmentation Prevention Graph**.
9. You should see spikes in “prevented fragmentation” in the graph as the files are being saved to disk, similar to the sample graph shown above.
10. The more content on the web page (i.e., streaming video), the greater number of fragments IntelliWrite® fragmentation prevention technology is likely to prevent.
11. Perform alternate file-write tests with different applications as desired. For example, run data-import procedures into an SQL database, or modify large existing MS Office docs, etc.
12. Remember to view the System Fragmentation Prevention Graph as the file modifications are occurring.

For a summary of results, go to the top menu and follow **Action > View Performance Report**. As you can see, Diskeeper takes immediate control of adverse system conditions and improves read and write access speed while lowering the amount of system resources necessary to execute a task.



New Diskeeper Administrator Dashboard

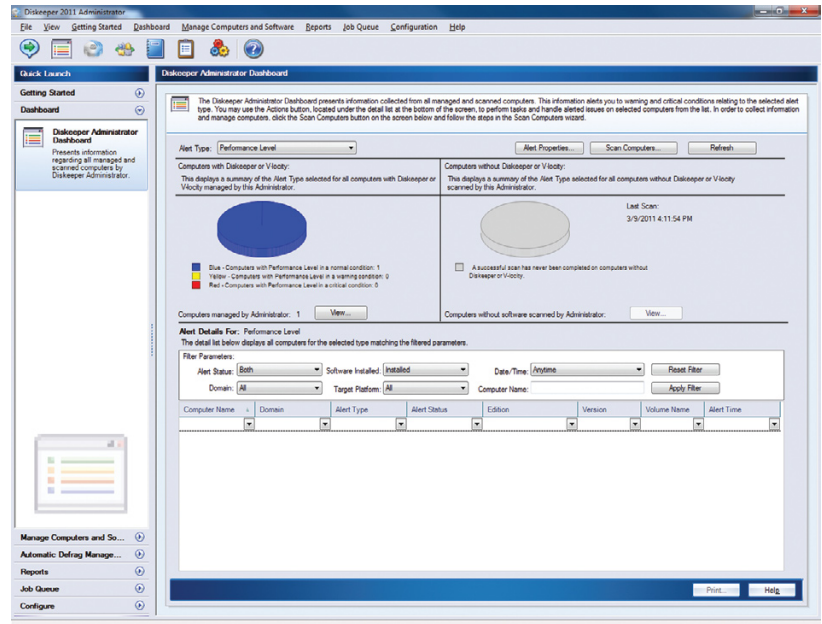
Diskeeper Administrator (an edition of Diskeeper specifically for network management) in version 2011 is a full-featured network “Dashboard.” New in this version:

- Enhanced defragmentation policy options available in Diskeeper 2011 (Efficient Mode and Extensive Mode).
- Enhanced reports include new statistics:
 - Saved I/O, average time to handle fragments by IntelliWrite® and Instant Defrag™ technology
 - Number of fragments eliminated by Instant Defrag
 - Number of fragments eliminated by other defrag,
 - Improved read/write access.
- MSDE database engine has been replaced with SQL Express for better performance.

This high-level “dashboard” provides important customizable performance alerts on systems (with or without Diskeeper) that have:

- Low free space
- Severe file fragmentation
- Extreme paging file or metadata fragmentation
- Product Activation expiration
- Diskeeper Updates available for installation
- Failures to defragment or where Diskeeper is not operational

This dashboard provides access to get more details on noted issues and has intuitive functionality, directly from



the dashboard, to initiate tasks such as remote control, deployment, and configuration to quickly remedy the situation.

To test this new functionality:

1. First, use Diskeeper Administrator to deploy the software (Diskeeper Professional, Pro Premier, Server or EnterpriseServer) to clients' systems, using Deployment and Defragmentation Policies of your preference.
2. Then, from the Dashboard, initiate scans selecting computers that have Diskeeper as well as some that do not have Diskeeper. Return to Diskeeper Administrator's Dashboard to experiment adjusting the Alert Types, Alert Filters and Properties to ensure the reporting and messages operate correctly according to your customized settings.

Get a customized Diskeeper price quote for your system now.
Or talk to a Diskeeper Specialist about your site needs now:
800-829-6468



Diskeeper Corporation • 7590 North Glenoaks Blvd., Burbank, CA 91504 • 800 829-6468 • www.diskeeper.com
Diskeeper Corporation Europe • Shaw House, Pegler Way, Crawley, West Sussex, RH11 7AF, UK • +44 (0) 1293 763 060 • www.diskeeper.com



Microsoft Partner