

NetVault™

Advanced Backup/Recovery Solutions for UNIX, Linux, and Windows



Supported NetVault Server/Client OS

Alpha Tru64, FreeBSD, HP-UX (PA-RISC / Itanium 2), IBM AIX, Linux (IA32 / Itanium 2), Mac OS X, NCR MP-RAS, SCO OpenServer, SCO UnixWare, SGI IRIX, Solaris (SPARC), Solaris (Intel), Windows 2000, Windows Server 2003 (IA32 / Itanium 2)

Supported NetVault Client OS

Novell NetWare, Windows NT, Windows 95/98/ME/XP Professional

Supported Drives

AIT 1/2/3, S-AIT, DDS2/3/4, DAT72, DLT1, DLT VS80, DLT 4000/7000/8000, SDLT220/320, DTF/DTF2, LTO/LTO2, Mammoth 2, StorageTek 9840, SLR7/60/100, VXA/VXA2

Supported Devices

ADIC, Breece Hill, Certance, Dell, Exabyte, Fujitsu, HP, IBM, Matsushita Kotobuki, NEC, Overland Storage, Plasmom, Qualstar, Quantum, Seagate, SONY, Spectra Logic, StorageTek (plus ACSLS), Sun, Tandberg Data

Supported SAN/NAS Devices

Ancor, Brocade, Chaparral, Crossroads, EMC, Network Appliance, Qlogic, Vixel

NetVault is a modular backup and restore storage management software that protects the full range of operating environments from single servers to data centers. NetVault simply resolves tough problems of storing ever growing amounts of data in ever complex system landscapes.

Main NetVault Features:

Complete Multi-platform Support

Any NetVault Server can backup and recover any supported client operating system of UNIX, Linux, FreeBSD, Windows, Netware, or Mac OS X. Remote control of any number of NetVault Servers is also possible over a network connection.

Centralized Management and Automation

Backups, restores, data migration, reports, tape media management can all be automated with NetVault's job scheduling and device management features.

All Platforms Utilize Easy-to-use GUI

No need to learn separate utilities for a variety of operating platforms, NetVault incorporates the same look-and-feel into every supported platform.

Shared Memory

NetVault's shared memory feature allows the administrator to determine how much I/O buffer cache to use to fine tune backup and restore performance.

Network Compression

For networks with low data bandwidth, NetVault Clients can compress data blocks before sending them over the network, increasing effective data throughput.

Compliant with Standard Tape Formats

When using UNIX or Linux, data is written in CPIO format; with Windows, data is written in the standard Microsoft Tape Format (MTF).

Broad Range of Support for DAS / SAN / NAS Convergence

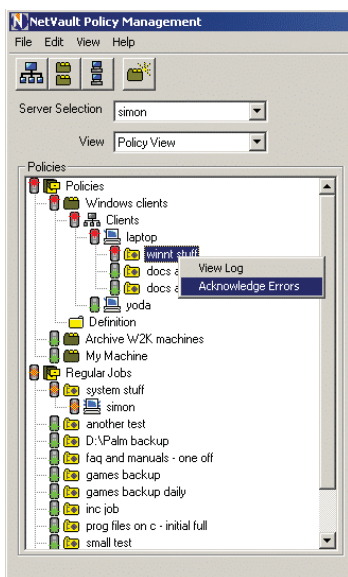
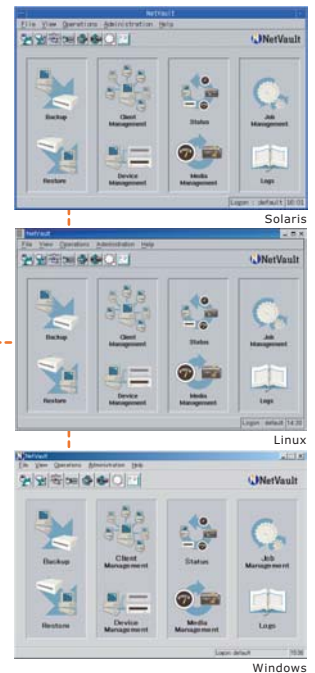
NetVault supports the latest LTO-2, SDLT, and S-AIT drives, and sports one of the broadest ranges of support for tape drives, auto-loaders, and libraries on the market today. NetVault covers a wide range of networking and storage protocols including SCSI, Fibre Channel, iSCSI, SCSI-over-IP, NAS (NDMP), GbE and TCP/IP. NetVault provides a multitude of options for NDMP device backup and recovery. With a variety of tools, NetVault can create a flexible, efficient backup storage infrastructure to meet any need.

Backup to Disk - Virtual Tape Library

Providing a structured backup to disk, NetVault's Virtual Tape Library operates and functions just like a real tape library. NetVault administrators can take advantage of the high performance, low cost attributes of disk for quick backups and restores. With or without the aid of a real tape library, an administrator can quickly setup a storage space for backup. If needed, multiple network clients can be backed up simultaneously to a virtual tape library. Backups can be migrated or duplicated to or from a virtual library to a real tape library for off-site storage.

Advanced Management Features

NetVault's latest release, version 7, includes advanced features for administrators to monitor performance and distribute backup permissions to other users without compromising data security. Policy management, User-level access (login with specific access rights), HTML/CSV/Text-based reporting, Windows Messaging, Printing, Email notification, and other utilities provide the NetVault administrator valuable time to concentrate on other tasks.



NetVault Policy Management Screenshot showing color differentiation for active jobs, completed jobs, or jobs with errors.

Backup Consolidation

Through the merger of incremental backups with previous full or consolidated backups, NetVault can create new full backups via a tape-to-tape copy operation. This allows administrators to schedule incremental backups of large file system servers and still provide full data protection without having to schedule cumbersome full backups. In addition to decreasing the backup window, NetVault's backup consolidation feature is a backup server based I/O process which does not affect the network client from where the data originated.

APM - Online Backup for Applications

NetVault supports APMs (Application Plugin Modules) for online backups for a wide variety of database and message applications; DB2, Informix, Lotus Notes, MS Exchange, MS SQL Server, MySQL, Oracle, PostgreSQL, SAP, Sybase, and others. With APMs, NetVault Servers and Clients can be enhanced to perform application specific backups. Interfacing with native APIs, NetVault draws data from the applications and catalogs backup data according to application type: all in a simple, point-and-click manner within NetVault's GUI.

Various Other Product Offerings

Disaster Recovery for a wide variety of platforms, including most Intel-based operating systems; NDMP backup for NAS devices; open file protection; encryption; NetWare support and more. NetVault's modular architecture allows administrators to shape, mold, and distribute functional modules where they need to be, a custom fit for every situation.

Application Plugin Modules (APM)

DB2, Informix, Lotus Notes/Domino, Microsoft Exchange, Microsoft SQL Server, MySQL, Oracle Online/RMAN, PostgreSQL, SAP, Sybase ASE, Teradata

Options

- Disk-to-disk Backup (Virtual Tape Library)
- NetWare Thin Client / SmartClient
- Open File Manager
- Disaster Recovery VaultDR Online/Offline
- Encryption Plugin
- NDMP Plugin
- NDMP Snapshot Manager Plugin
- NDMP SnapMirror to Tape Plugin
- NDMP SnapVault Manager Plugin
- VaultShare (ACSLs support)

Minimum System Requirements

- Sufficient disk space to hold the NetVault software and NetVault Database index
- 128MB RAM or more
- TCP/IP network
- Monitor display capable of 800x600 or better resolution and 256 or more colors (for the NetVault GUI)
- 133MHz or higher processor

For Windows NT4.0 systems:

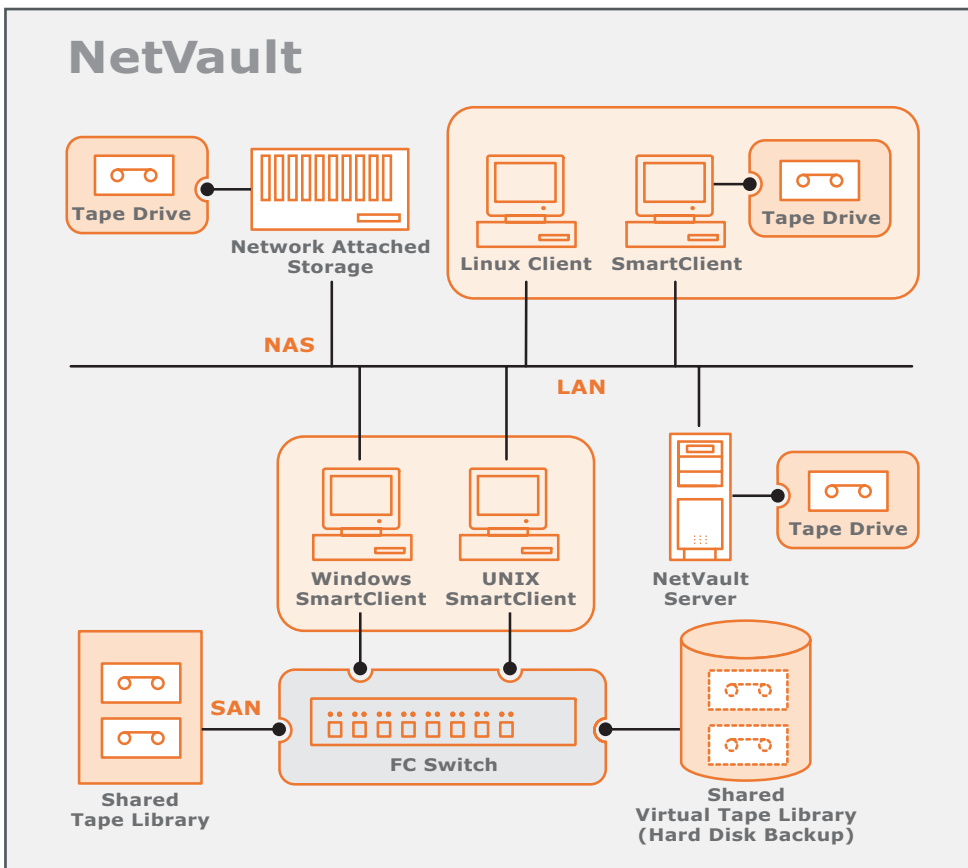
- Windows NT Service Pack 5 or later
- Internet Explorer 3.02 or later (for the NetVault GUI)

Information contained within this document is subject to change without notice or prior notification. Please consult Bakbone's website for a complete up-to-date information and supported device lists: www.bakbone.com

Sound too good to be true?

Come have a test drive with a free 45-day demo at: www.bakbone.com

©2004 BakBone Software, K.K. BakBone Software, the BakBone logo and NetVault are the trademarks or registered trademarks of BakBone Software, Inc., in the United States and/or in other countries. All other names and trademarks are the property of their respective owners.



About BakBone

BakBone Software is a leading data recovery solution provider that develops and globally distributes data backup, restore, and disaster recovery software for network storage environments. BakBone delivers scalable solutions that address the needs of large enterprise environments and small to medium size businesses. Incorporated in 2000, BakBone Software's products are used by companies worldwide and are distributed through a network of OEMs and solution providers.

Corporate Headquarters

BakBone Software
10145 Pacific Heights Blvd.
Suite 500
San Diego, CA 92121
Phone: +1-858-450-9009
Phone: +1-866-484-2663
Fax: +1-858-450-9929
info@bakbone.com

Pacific Rim Headquarters

BakBone Software K.K.
Shinjuku Dai-ichi Seimei Bldg.
11F, 2-7-1 Nishi Shinjuku,
Shinjuku-ku Tokyo,
Japan 163-0711
Phone: 03-5908-3511
Fax: 03-5908-3512
sales@bakbone.co.jp
www.bakbone.co.jp

European Headquarters

BakBone Software Ltd.
Merck House, Seldown Lane
Poole, Dorset BH15 1TW
England
Phone: +44-1202-241000
Fax: +44-1202-249000
info@bakbone.co.uk
www.bakbone.com